



*Nahata*

EXQUISITE MARBLE, TIMELESS FURNITURE



*Nahata*

— STONE —  
COLLECTION

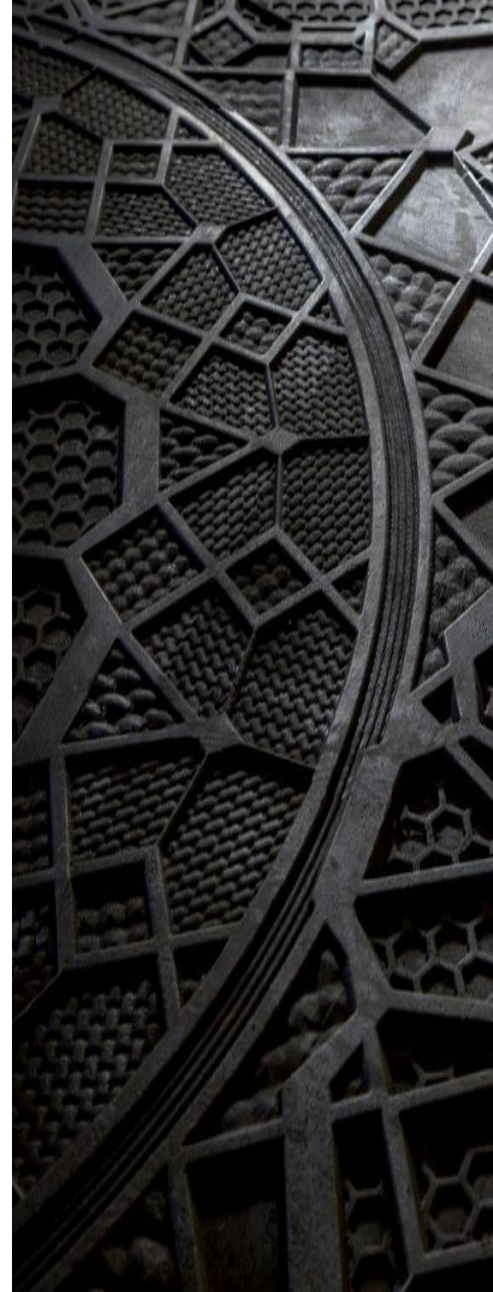
# — PORTFOLIO —



Mural



Jali



Panel

# — PORTFOLIO —



Metal



Temple



Cladding

# — PORTFOLIO —



Inlay



Product



Tiles

*Nahataz*

— CATEGORY —

---

# MURAL

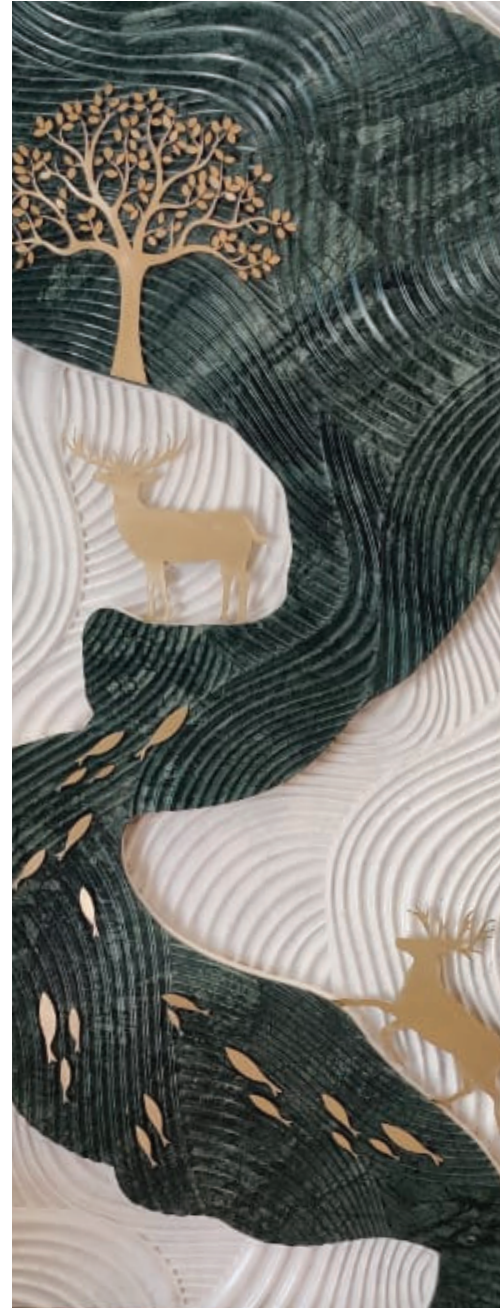
---



Floral

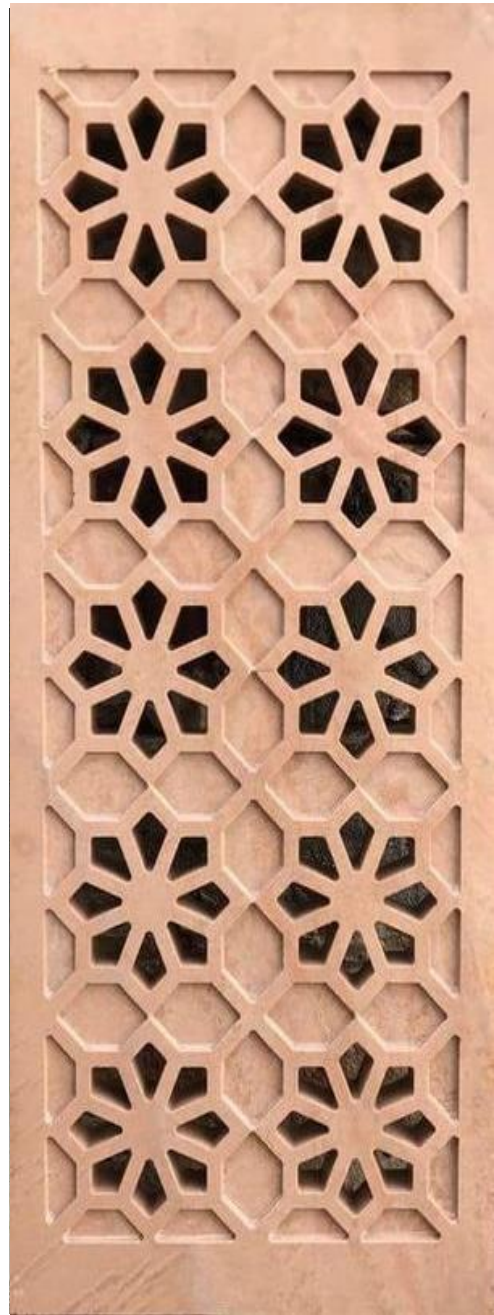


Divinity



Abstract

# JALI



Elevation



Antique



Partition



---

# PANEL

---



Geometric  
2D



Flure



Geometric  
3D

# METAL



Brass



Silver



German  
Silver

# — TEMPLE —



Motive



Gold Leaf



Backlit

# CLADDING



Elevation



Inerior



Water  
Bodies

# INLAY



Brass



Stone



Mop

# PRODUCT



Table Top



Planter



Gifts

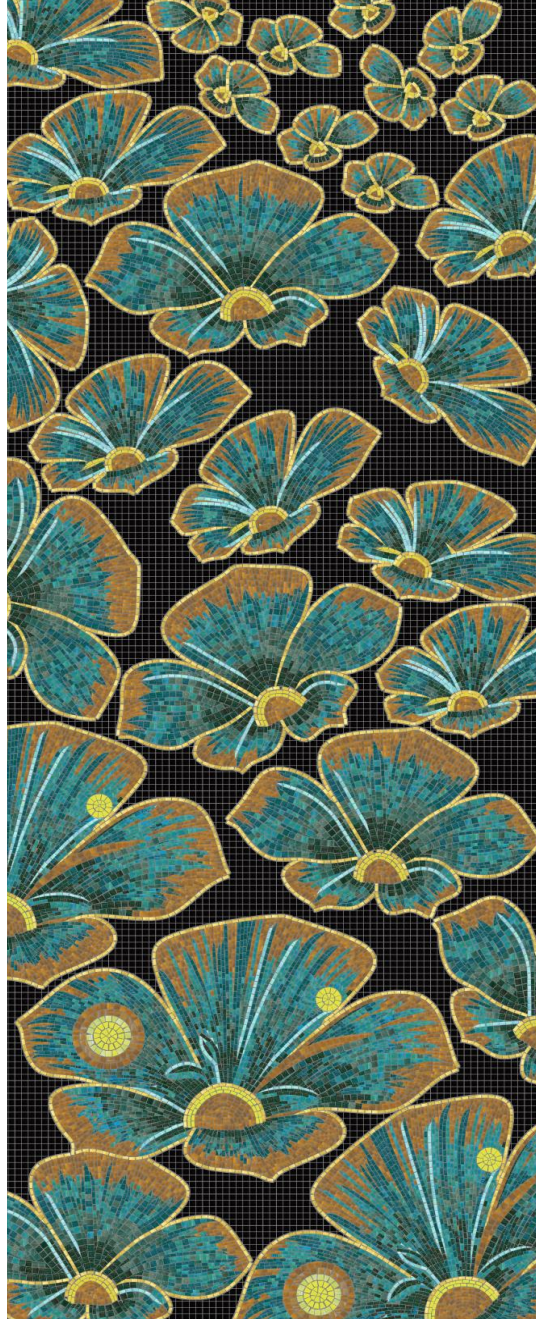
---

# TILES

---



Flute



Mosaic

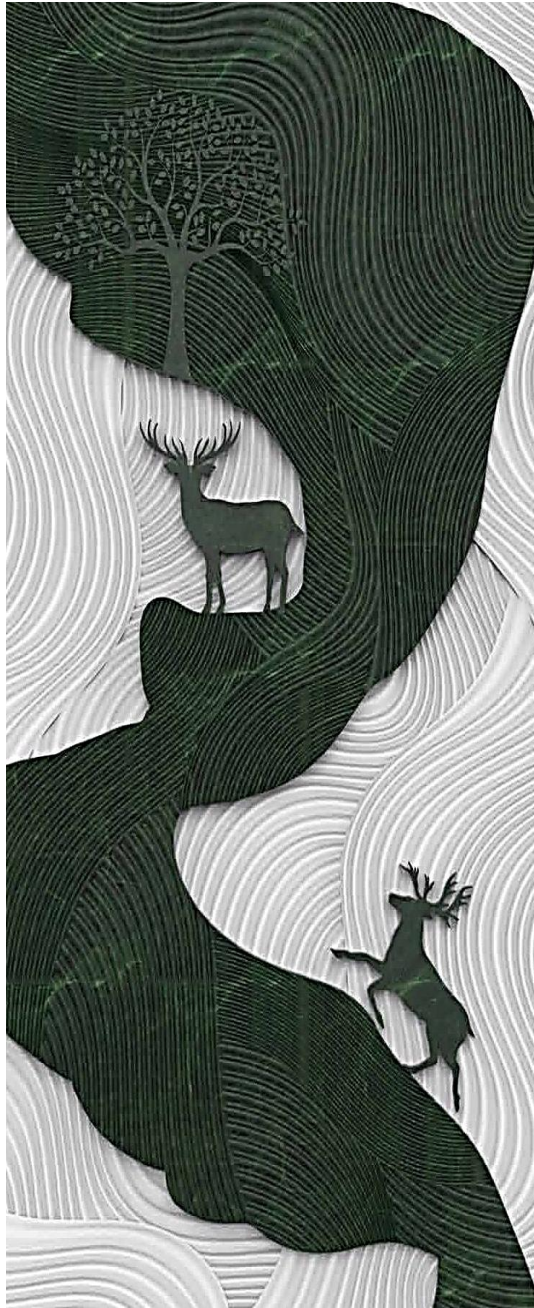


Terrazzo

# RENDER



Sketch



3D



2D





*Nahata*

SILVER FURNITURE

# LIVING

## CHAIRS

COMFORT MIXED  
WITH SILVER!



## SOFA SETS



JUST THE BEST WE HAVE FOR YOU!

STOOLS  
& MIRRORS



# SWINGS

"LUXURY IS IN EACH DETAIL."



# DECOR

## CONSOLE



# CLOCKS & FIGURINES



"ART IN THE PUREST FORM!"



# CHOWKI



# GOD IDOLS



---

# DINING

---

## DINING SETS

---

"YOUR SATISFACTION IS OUR PRIORITY"





# TABLES & SEATING





**BEDROOM**



# WARDROBES



# COUCHES



# CRADLES



# TEMPLES



# PROCESS

TEAK WOOD



1. Water-Resistance
2. Weather Proof
3. Hard Wood



TEAK WOOD FURNITURE



1. Classy & Chic
2. Natural Durability
3. Low Stiffness



SILVER BARS



1. High Solderability
2. Capable of being shaped or bent into thin sheets.



SILVER FOIL



1. 99% Pure Silver
2. High Ductility
3. Lustrous Shine



TEAK WOOD FURNITURE LINED UP WITH SILVER FOIL



1. Stylish Look
2. Pure Silver Shining Sheet
3. Compatible for Indoor Furniture



## 1. DESIGN

Approach us with your compatible furniture looks.



## 2. Wooden Model

Once you are satisfied and approve the 3D model of the design, our craftsmen will then start designing the wooden model.



## 3. Sand Paper Rubbing

After completing the wooden model, the furniture is furnished with sandpaper to remove all the roughness and clean the wood.



## 4. Silver Cladding

Silver Cladding takes place when the wooden model is fully ready and further in this process, the silver foils are mounted on the wooden model.



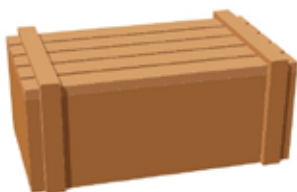
## 5. Design on Cladding

After assembling the silver foil on the furniture, the craftsmen sketches the handcrafted designs on the cladding.



## 6. Polish

The last step done by our craftsmen is polishing, which gives the furniture an immense shine.



## 7. Packing

As compare to other procedures, we give equal importance to packaging and make sure that the products are delivered to you safely and securely.



## 8. Deliver

On Time Delivery of your product items is the essential aim of our company.

*Nahata*

## CONTACT

VINAY NAHATA  
vinay@nahataz.com



G-1<sup>st</sup> 72, Udhyog Vihar, Sukher  
Udaipur, Raj.



Eternal Handicrafts, Plot No.3,  
Amberi, Udaipur, Raj.